



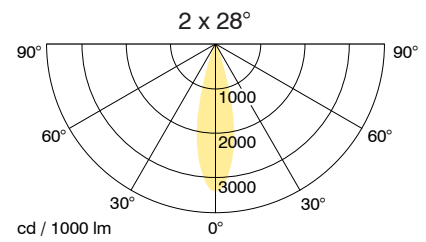
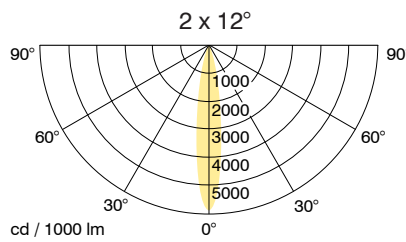
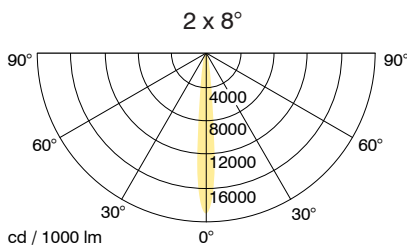
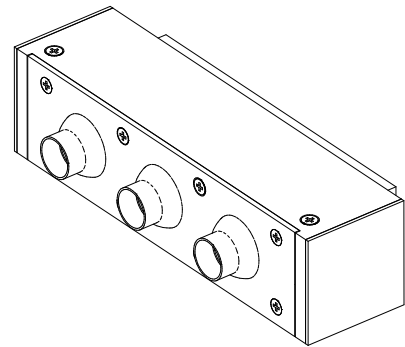
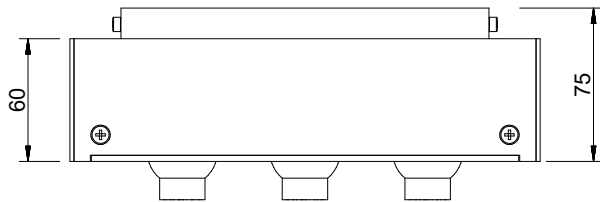
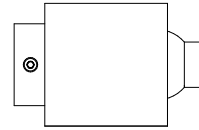
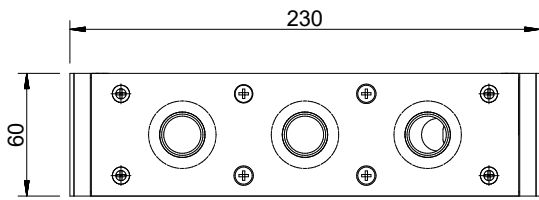
## KAMAELEON

### Ceiling mounted luminaire

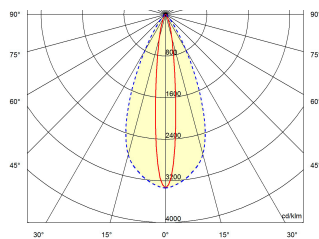
LED bollard for individual spotlighting. This luminaire is available with 1x3 or 1x6 LED modules. The narrow-beam 1,5W High Power LEDs are adjustable by a ballpoint and thereby provide the targeted illumination of objects or walls. All electrical components are housed in the base.



Lamp	1,5 W pro Power LED
LED lumen output	approx. 100 lm/W
Optic	Ledil-lens 8°/16°/28°/44°
Control gear	LED Treiber internal
Dimming (Options)	1–10 V, DALI, Push
Luminaire type, mounting	Ceiling mounted
Dimensions	60 mm, H 75 mm, L=230
Cast, heat sink	extruded aluminium profile anodized black
Colour/finish	Powder coated, RAL 9016 (other RAL colours optional)
Protection marking, compliance	IP20, <b>CE</b>
Specials	Customized versions, more light colours or colour renderings on request



ex: 47° + 14°



Article number \_\_\_\_\_

Luminaire type	Identification	Reflector / Beam angle	Color temperature	CRI	Driver	RAL
I = Mounted	1000 = Kamaeleon	2 = 47° + 14°	90 = 2000 K - 3000 K	70	EV = On/Off	0000 = None
		D = 2 x 8°	95 = 2200 K - 4000 K	80	AV = 1-10V	1000 - 9018 = RAL
		F = 2 x 12°	96 = 2700 K - 5000 K	90	DA = Dali	
		L = 2 x 28°	97 = 2700 K - 4000 K		PH = Push	
			98 = 2200 K - 5000 K			
			99 = 2700 K - 5700 K			