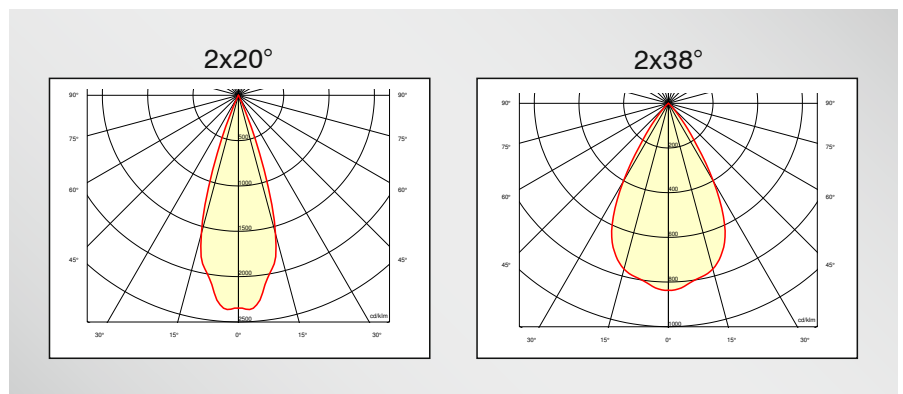
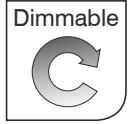


Lichtpunktabstand/Light point distance:	25mm, 50mm
Treiber/Driver:	Extern/External
Leistung/Wattage:	16W – 32W
Lichtstrom/Luminous Flux:	1440lm – 1952lm
Lichtverteilung/Beam angle:	2x20°, 2x38°
Wirkungsgrad/Efficiency:	71%
Farbtemperatur/Color Temperature:	2200K – 5700K
CRI:	>80, >90
Schutzklasse/Protection Class:	III
Schutzart/IP-Protection:	IP20
Oberfläche Gehäuse/Casing Finish:	Pulverbeschichtet/Powder Coated
Sonderausführung/Custom versions:	Auf Anfrage/On request

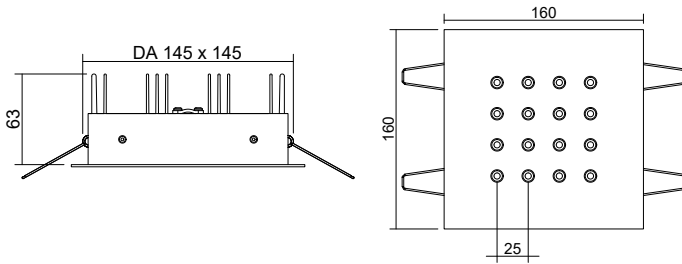




# MONO

## LFO 4x4 EINBAU/RECESSED LP25

Lichtpunktabstand 25mm/Light point distance 25mm

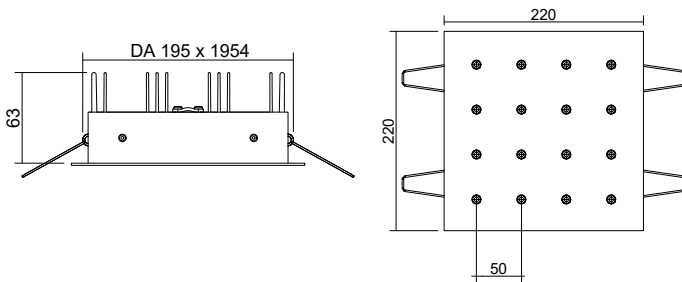


Produkt ID	Verbrauch + Lichtstrom / Wattage + Luminous Flux		
	161 = 16x1W	165 = 16x1,5W	162 = 16x2W
1409	1440 lm	1952 lm	1952 lm

Weitere Sonderausführungen auf Anfrage / Custom solutions on request

## LFO 4x4 EINBAU/RECESSED LP50

Lichtpunktabstand 50mm/Light point distance 50mm



Produkt ID	Verbrauch + Lichtstrom / Wattage + Luminous Flux		
	161 = 16x1W	165 = 16x1,5W	162 = 16x2W
1411	1440 lm	1952 lm	1952 lm

Weitere Sonderausführungen auf Anfrage / Custom solutions on request



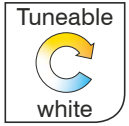
ARTIKELNUMMER / ARTICLE NUMBER:



Produktkennung Product ID	Verbrauch Wattage	Treiber Driver	Abstrahlwinkel Beam Angle	Farbtemperatur Color Temperature	CRI CRI	Farbe Color Finish	Extras Accessories
1409	161 = 16x1W	X = Ohne/None	B = 2x20°	27 = 2700K	8 = 80	01 = RAL 9016 ○	X = Ohne/None
1411	165 = 16x1,5W	Y = DALI	F = 2x38°	30 = 3000K	9 = 90	02 = RAL 9006 ●	
	162 = 16x2W	Z = On/Off		35 = 3500K		03 = RAL 9005 ●	
				40 = 4000K		04 = RAL 7016 ●	
				50 = 5000K*		05 = DB703 ●	
				57 = 5700K*			

Andere Farbkombinationen oder Temperaturen möglich/Other color combinations or temperatures possible

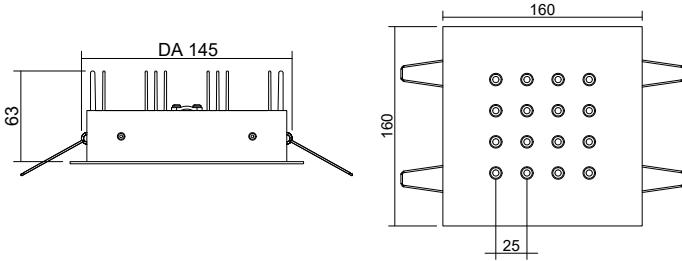
\*5000K und 5700K nur CRI 80/ 5000K and 5700K only CRI 80



# TUNEABLE WHITE

## LFO 4x4 EINBAU/RECESSED LP25

Lichtpunktabstand 25mm/Light point distance 25mm

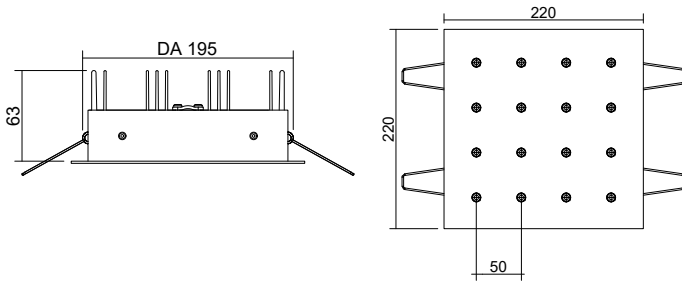


Produkt ID	Verbrauch + Lichtstrom / Wattage + Luminious Flux
	162 = 16x2W
1413	2.720 lm + 3.088 lm

Weitere Sonderausführungen auf Anfrage / Custom solutions on request

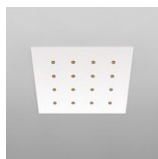
## LFO 4x4 EINBAU/RECESSED LP50

Lichtpunktabstand 50mm/Light point distance 50mm



Produkt ID	Verbrauch + Lichtstrom / Wattage + Luminious Flux
	162 = 16x2W
1414	2.720 lm + 3.088 lm

Weitere Sonderausführungen auf Anfrage / Custom solutions on request



ARTIKELNUMMER / ARTICLE NUMBER:

Produktkennung Product ID	Verbrauch Wattage	Treiber Driver	Abstrahlwinkel Beam Angle	Farbtemperatur Color Temperature	CRI CRI	Farbe Color Finish	Extras Accessories
1413	162 = 16x2W	X = Ohne/None	B = 2x20°	T1 = 2200K - 4000K	8 = 80	01 = RAL 9016 ○	X = Ohne/None
1414		W = DALI DT8	F = 2x38°	T2 = 2200K - 4500K	9 = 90	02 = RAL 9006 ●	
				T3 = 2200K - 5000K		03 = RAL 9005 ●	
				T4 = 2200K - 5700K*		04 = RAL 7016 ●	
				T5 = 2700K - 4000K		05 = DB703 ●	
				T6 = 2700K - 4500K			
				T7 = 2700K - 5000K			
				T8 = 2700K - 5700K*			

Andere Farbkombinationen oder Temperaturen möglich/Other color combinations or temperatures possible

\*5700K nur CRI 80/ 5700K only CRI 80