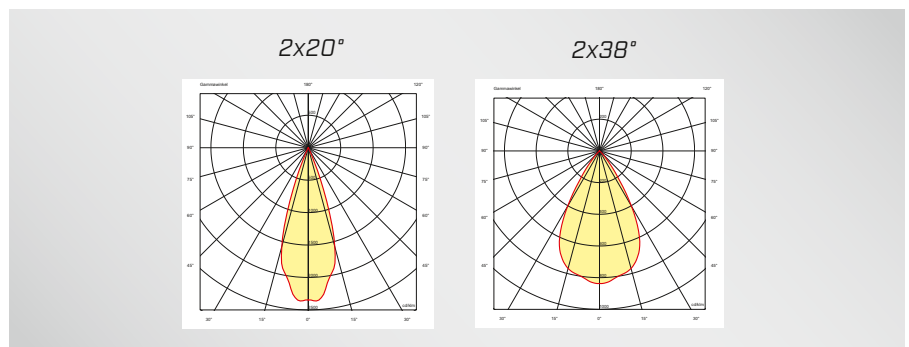


Lichtpunktabstand/Light point distance:	50mm
Treiber/Driver:	Extern/External
Leistung/Wattage:	4W – 8W
Leuchtenlichtstrom/Real Luminous Flux:	386 lm – 687 lm
Lichtverteilung/Beam angle:	2x20°, 2x38°
Max. Wirkungsgrad/Max. Efficiency:	ca. 71%
Farbtemperatur/Color Temperature:	2200K – 5700K
CRI:	>80, >90
Schutzklasse/Protection Class:	III
Schutzart/IP-Protection:	IP20
Oberfläche Gehäuse/Casing Finish:	Aluminium/aluminum
Sonderausführung/Custom versions:	Auf Anfrage/On request

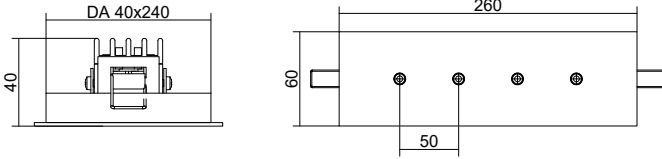




MONO

LFO 1x4 EINBAU/RECESSED LP50

Lichtpunktabstand 50mm/Light point distance 50mm



Produkt ID	Bestromung, Leistung + Lichtstrom/ Current, wattage + luminious flux		
	@350mA 004 = 4W	@500mA 006 = 6W	@700mA 008 = 8W
1375	386 lm	517 lm	687 lm
Lichtquelle Energieeffizienz Light source energy efficiency 3000K			

für/for 3000K, CRI90 und 2x38° Weitere Ausführungen auf Anfrage / Other versions on request



ARTIKELNUMMER / ARTICLE NUMBER:

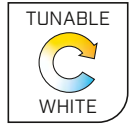
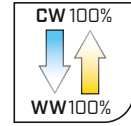
□ □ □ □ □ □ □ □ □ □ □ □ □ □ □ □

Produktkennung Product ID	Verbrauch Wattage	Treiber Driver	Abstrahlwinkel Beam Angle	Farbtemperatur Color Temperature	CRI CRI	Farbe Color Finish	Extras Accessories
1375	004 = 4W	X = Ohne/None	B = 2x20°	27 = 2700K	8 = 80	XX = Ohne/None	X = Ohne/None
	006 = 6W	Y = DALI	F = 2x38°	30 = 3000K	9 = 90		
	008 = 8W	Z = On/Off		35 = 3500K			
				40 = 4000K			
				50 = 5000K*			
				57 = 5700K*			

Andere Farbkombinationen oder Temperaturen möglich/Other color combinations or temperatures possible

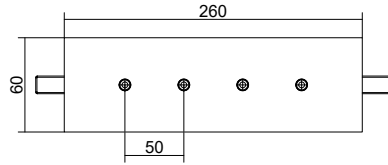
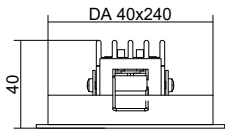
* MONO: 5000K und 5700K nur CRI 80/ MONO: 5000K and 5700K only CRI 80

TUNABLE WHITE



LFO 1x4 EINBAU/RECESSED LP50

Lichtpunktabstand 50mm/Light point distance 50mm



Produkt ID
1378

Bestromung, Leistung + Lichtstrom/
Current, wattage + luminous flux

008 = 8W @700mA

500 lm / 630 lm

Lichtquelle Energieeffizienz
Light source energy efficiency
2700K - 5000K



für/for 2700K - 5000K, CRI90 und 2x38° Weitere Ausführungen auf Anfrage / Other versions on request



ARTIKELNUMMER / ARTICLE NUMBER:

Produktkennung Product ID	Verbrauch Wattage	Treiber Driver	Abstrahlwinkel Beam Angle	Farbtemperatur Color Temperature	CRI CRI	Farbe Color Finish	Extras Accessories
1378	008 = 8W	X = Ohne/None	B = 2x20°	T1 = 2200K - 4000K	8 = 80	XX = Ohne/None	X = Ohne/None
				T2 = 2200K - 4500K			
			T3 = 2200K - 5000K				
			T4 = 2200K - 5700K*				
			T5 = 2700K - 4000K				
			T6 = 2700K - 4500K				
			T7 = 2700K - 5000K				
			T8 = 2700K - 5700K*				

Andere Farbkombinationen oder Temperaturen möglich/Other color combinations or temperatures possible
*5700K nur CRI 80/ 5700K only CRI 80