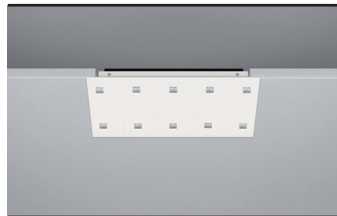


## SQUARE 2x5 mono

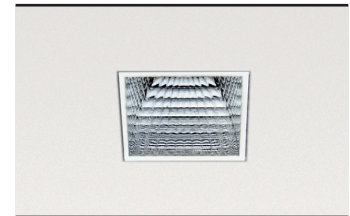
## Recessed Ceiling Luminaire

Recessed Ceiling Luminaire with Power LEDs. The luminaire is optimized for a uniform and glare-free illumination. Perfectly as an energetic exchange of conventional general lighting.

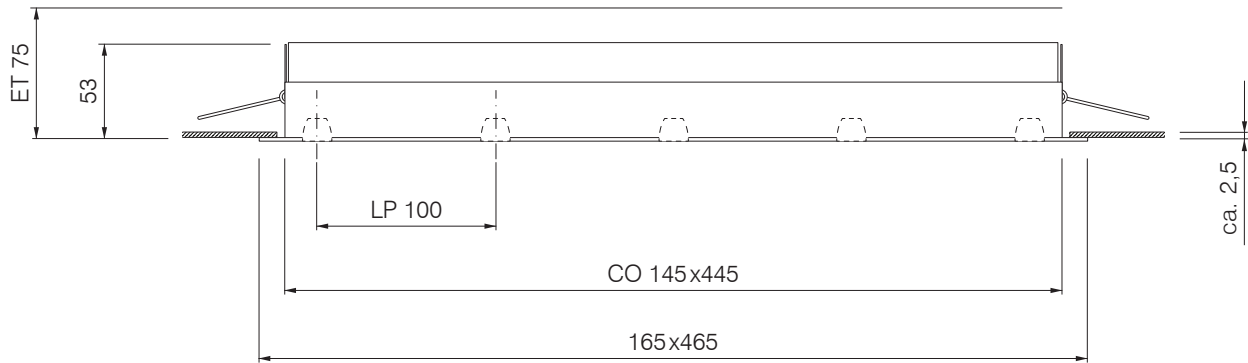
Particularly low mounting depth.



Reflector detail in original size. Outlet: 15x15 mm. 2x35° and 2x45° reflector VDU workstation suitable acc. DIN EN 12464-1:2011



Lamp	Power LEDs, 10x 2 W, light point spacing 100 mm
LED lumen output	1800 lm @ 700 mA, 180 lm/W
<small>The reference values based on 4000 K with CRI 80</small>	
Light technology	Reflector: Aluminium coated PC, micro faceted, 15x 15 mm
Control gear	LED driver external
Dimming (options)	1–10 V, DALI, Push
Luminaire type, assembly	Ceiling recessed, tool-free with tension springs
Dimensions	LxWxH 165x465x53 mm, CO 145x445 mm, MD 75 mm,
Cast, heat sink	Powder coated sheet steel, extruded aluminium profile anodized black
Colour / finish	Powder coated, RAL 9016 (other RAL colors optional)
Protection marking, compliance	IP20, <b>CE</b>
Specials	Customized versions, more light colours or colour renderings on request



EVG on/off = EV

1-10 V = AV

Dali = DA

Push = PH

Please replace the item number placeholder XX with the listed operating device options:

Light distribution	Light colour	Color rendering	Control gear	Order No.	+RAL
<p>2x35°</p>	2700 K	CRI 80	1-10 V, DALI, Push	A 3110 P 2780 XX 9016	
		CRI 90	1-10 V, DALI, Push	A 3110 P 2790 XX 9016	
	3000 K	CRI 80	1-10 V, DALI, Push	A 3110 P 3080 XX 9016	
		CRI 90	1-10 V, DALI, Push	A 3110 P 3090 XX 9016	
	4000 K	CRI 80	1-10 V, DALI, Push	A 3110 P 4080 XX 9016	
<p>2x45°</p>	5000 K	CRI 75	1-10 V, DALI, Push	A 3110 P 5075 XX 9016	
	2700 K	CRI 80	1-10 V, DALI, Push	A 3110 T 2780 XX 9016	
		CRI 90	1-10 V, DALI, Push	A 3110 T 2790 XX 9016	
	3000 K	CRI 80	1-10 V, DALI, Push	A 3110 T 3080 XX 9016	
		CRI 90	1-10 V, DALI, Push	A 3110 T 3090 XX 9016	
4000 K	CRI 80	1-10 V, DALI, Push	A 3110 T 4080 XX 9016		
5000 K	CRI 75	1-10 V, DALI, Push	A 3110 T 5075 XX 9016		